

READ ALL THESE INSTRUCTION BEFORE INSTALLING

WARNING - RISK OF FIRE AND ELECTRICAL SHOCK. ALL ELECTRICAL DEVICES MUST BE INSTALLED BY A QUALIFIED ELECTRICIAN ONLY. INSTALLATION MUST COMPLY WITH THE NATIONAL ELECTRICAL CODE, AS WELL AS LOCAL AND FEDERAL REGULATIONS. ALWAYS DISCONNECT POWER AT THE ELECTRICAL PANEL BEFORE SERVICING. IMPROPER CONNECTION OR USE OF DEVICES CAN RESULT IN PERMANENT DAMAGE AND WILL VOID THE PRODUCT WARRANTY.

RETAIN THESE INSTRUCTIONS FOR FUTURE REFERENCE.



1 PREPARE THE DEVICE: USE A FLATHEAD SCREWDRIVER TO REMOVE THE COVER OF THE DUAL TECH CEILING MOUNTED OCCUPANCY SENSOR.

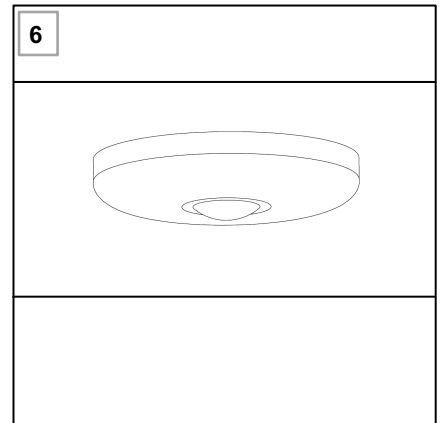
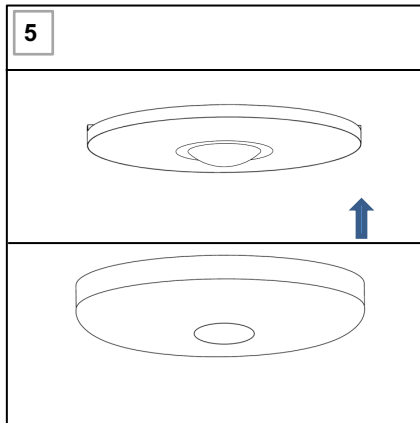
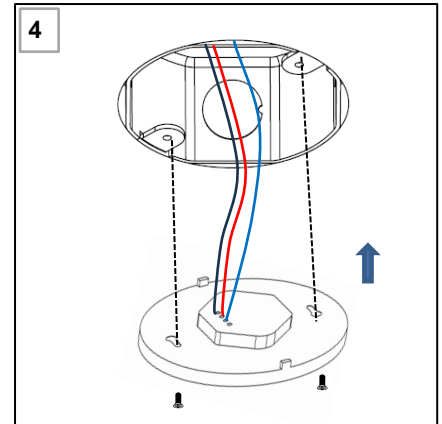
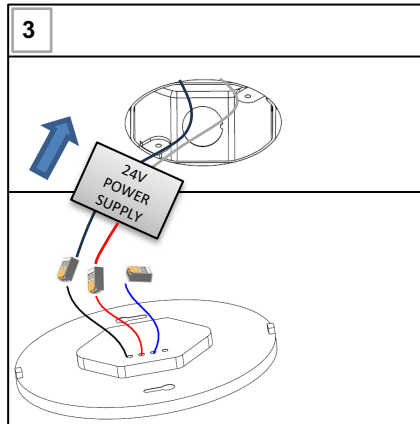
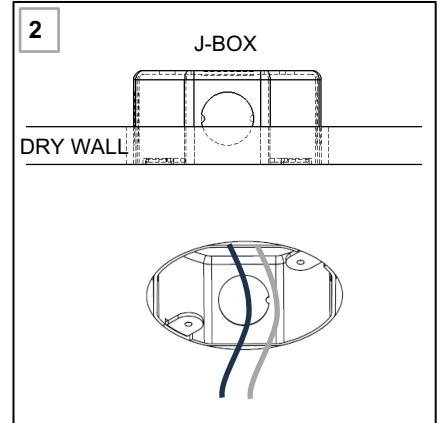
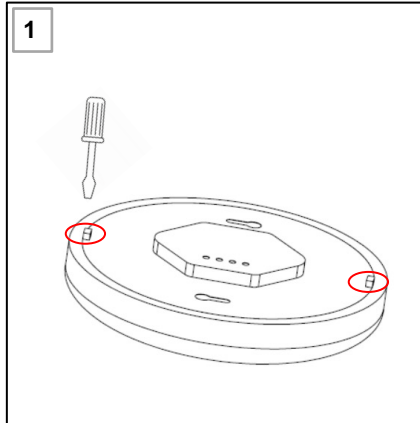
2 CONNECT POWER SUPPLY: 24V POWER SUPPLY SHOULD BE AS PER WIRING DIAGRAM.

3 WIRING CONNECTIONS: CONNECT THE OUTPUT OF THE 12-24V POWER SUPPLY TO THE DUAL TECH CEILING MOUNTED OCCUPANCY SENSOR. (REFER TO THE WIRING DIAGRAM ON PAGE 2 FOR DETAILED WIRING INSTRUCTIONS.) ONCE THE SENSOR IS POWERED, A RED LED UNDER THE SENSOR LENS WILL TURN ON. INSERT THE SENSOR CONTROL IN THE J-BOX.

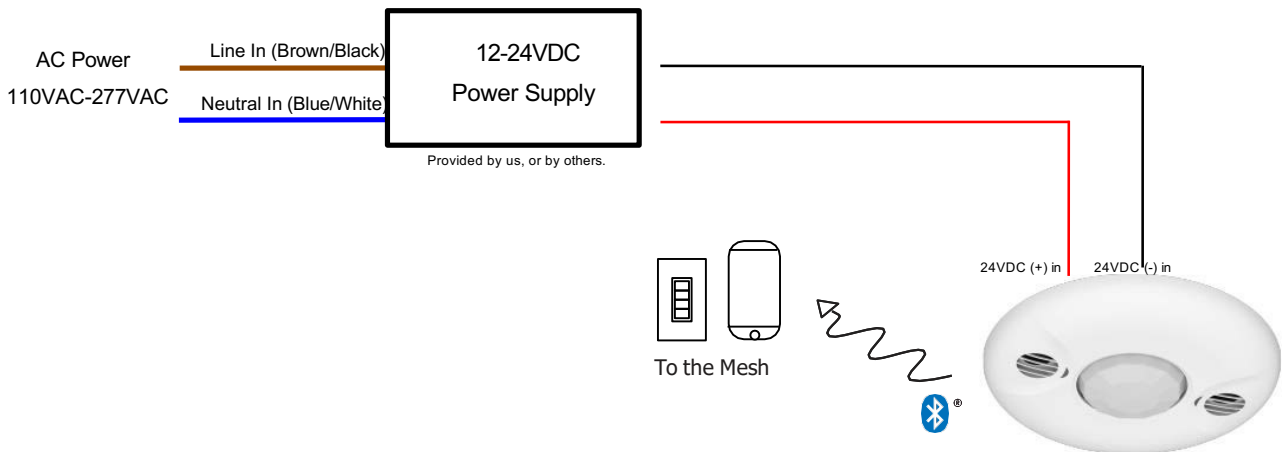
4 MOUNT THE DEVICE: ALIGN THE TWO KEY-SHAPED HOLES OF THE SENSOR WITH THOSE ON THE J-BOX AND SECURE THE DEVICE TO THE CEILING. MAKE SURE ALL THE WIRES ARE INSIDE THE J-BOX.

5 REPLACE THE COVER: REATTACH THE SENSOR COVER.

6 TURN THE POWER ON AND CHECK THE SENSOR



**Wiring Diagram | S-OD-S12-DFWH
| S-OD-S24-DFWH
Dual Tech Ceiling Mounted Occupancy Sensor**



Standard non-metallic J-Box
supplied by others highly recommended
to maximize wireless coverage.

*Illustration is for example purposes only.