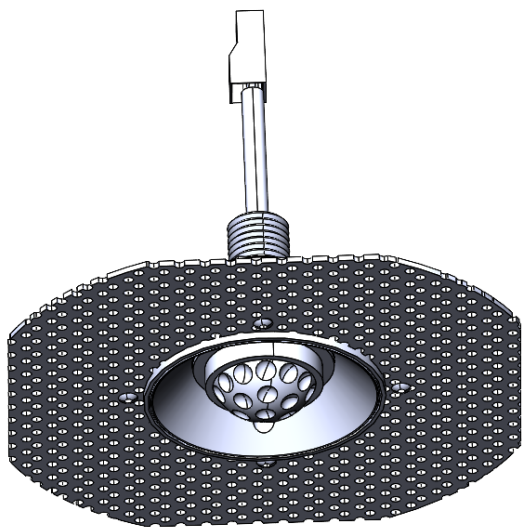




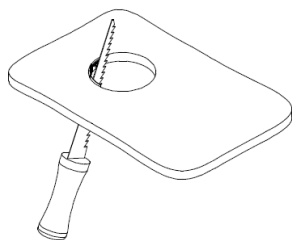
TRIMLESS OCCUPANCY SENSOR (S-OP-C-12-DTWH) INSTALLATION INSTRUCTIONS



WARNING - RISK OF FIRE AND ELECTRICAL SHOCK. FIXTURE MUST BE INSTALLED BY A QUALIFIED ELECTRICIAN ONLY. FIXTURE IS INTENDED FOR INSTALLATION IN ACCORDANCE WITH THE NATIONAL ELECTRICAL CODE, LOCAL AND FEDERAL SPECIFICATIONS. DISCONNECT POWER AT ELECTRICAL PANEL BEFORE SERVICING. RETAIN THESE INSTRUCTIONS FOR MAINTENANCE REFERENCE.

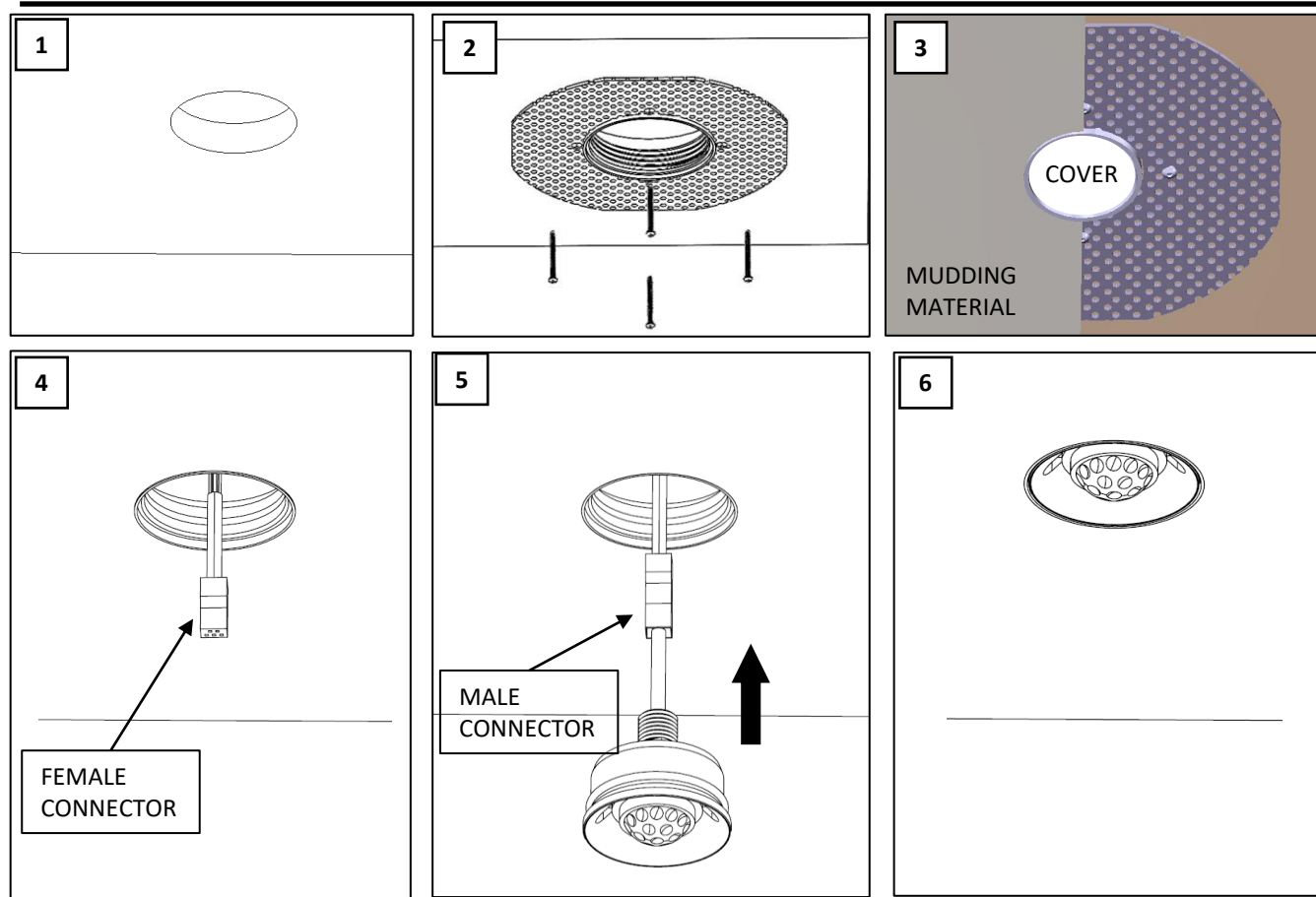
MATERIALS USED FOR CEILING FIXATION SHOULD CONFORM TO THE RELEVANT BUILDING REGULATIONS.

CUTOUT TABLE



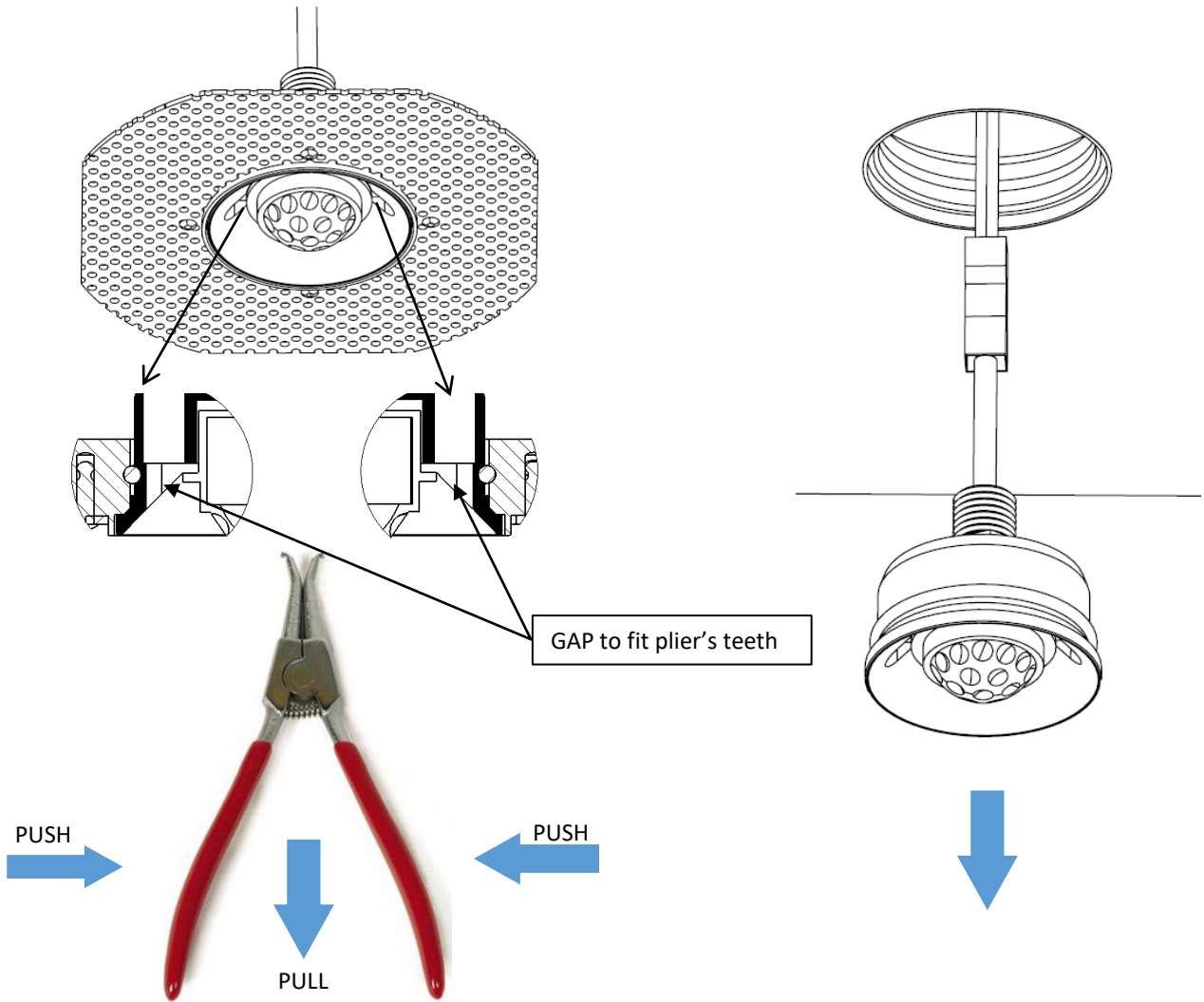
FIXTURE	CUTOUT
SENSOR	63.5 mm / 2.5"

FIXTURE INSTALLATION



1. CUT A HOLE 63.5 mm / 2.5" (FIGURE 1)
2. INSTALL MUD RING AS SHOWN IN (FIGURE 2). USE FIBERGLASS TAPE ON THE EDGES OF THE PERFORATED SHEET. SECURE THE MUD RING WITH 4 NAILS IN THE HOLES OF THE PERFORATED SHEET.
3. PLACE A CARDBOARD TO COVER THE HOLE OF THE FIXTURE. APPLY MUDDING MATERIAL OVER THE PERFORATED SHEET AND AROUND THE TRIM COLLAR. SAND AND FINISH AS REQUIRED (FIGURE 3)
4. PULL OUT THE FEMALE CONNECTOR FROM THE CEILING (FIGURE 4)
5. CONNECT THE SENSORE'S MALE CONNECTOR TO THE FEMALE (FIGURE 5)
6. INSERT THE SENSOR INTO THE TRIM OPENING. MAKE SURE THE WIRES ARE ALL THE WAY IN. (FIGURE 5)
7. AFTER STEP 5 IT SHOULD LOOK LIKE (FIGURE 6).

FIXTURE MAINTENANCE



- TURN OFF POWER BEFORE CHANGING THE ACCESSORIES.
- USE A REVERSE PLIER (CHAIN PLIER) PULL OUT THE FIXTURE FROM THE CEILING
- ENGAGE THE TEETH OF PLIER IN THE GROOVE AS SHOWN WITH ARROWS IN THE FIGURE
- GET A GOOD GRIP PRESSURE WITH ONE HAND ON THE CEILING AROUND THE RING AND PULL OUT THE SENSOR.
- DISCONNECT CONNECTORS, CHANGE THE ACCESSORIES, CONNECT THE WIRES BACK USING THE CONNECTORS AND INSTALL THE FIXTURE BY PUSHING INTO THE RING.

BubblyNet, 615 Drew St. Clearwater, FL 33755. • Ph 727.316.5319 • Fx 727.683.9720 • www.bubblynet.com

The manufacturer reserves the right to change or modify the design, dimensions and specifications at any time without notice. The manufacturer accepts no liability for consequential damage which is occasioned to the user based on the data provided.