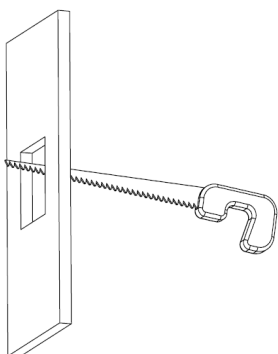


T4 + T 7 TOUCHSCREEN INSTALLATION INSTRUCTIONS



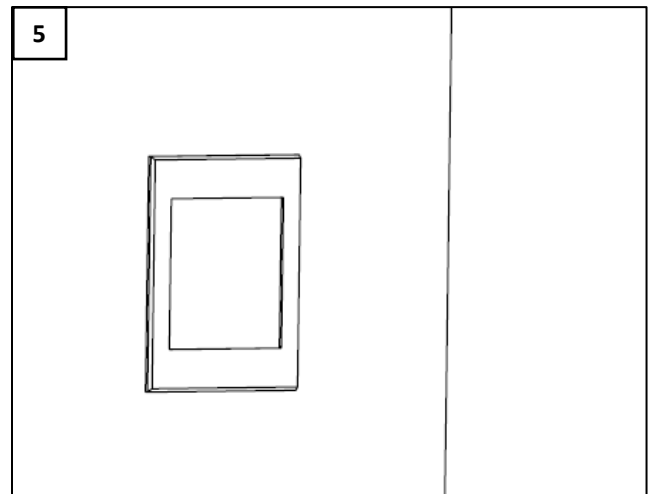
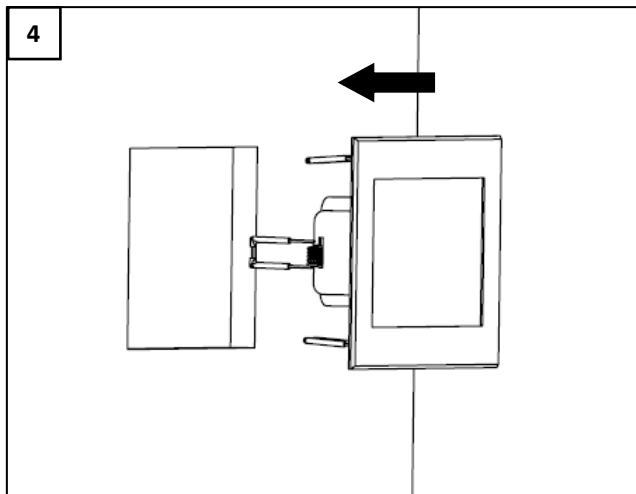
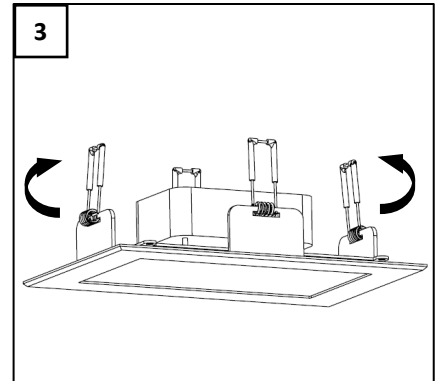
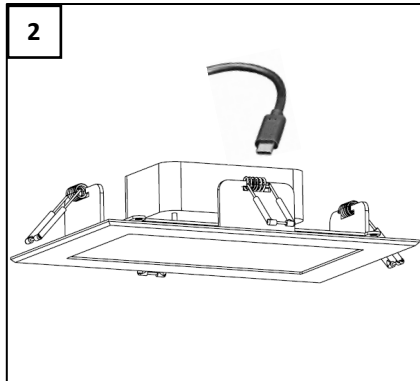
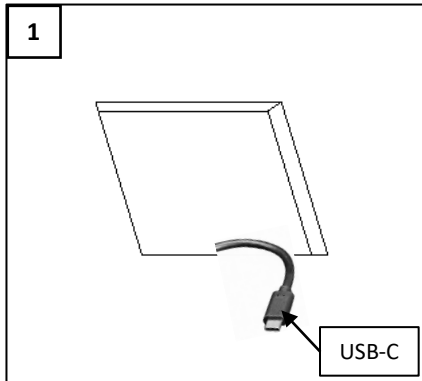
WARNING - RISK OF FIRE AND ELECTRICAL SHOCK. DEVICE MUST BE INSTALLED BY A QUALIFIED ELECTRICIAN ONLY. DEVICE IS INTENDED FOR INSTALLATION IN ACCORDANCE WITH THE NATIONAL ELECTRICAL CODE, LOCAL AND FEDERAL SPECIFICATIONS. DISCONNECT POWER AT ELECTRICAL PANEL BEFORE SERVICING. RETAIN THESE INSTRUCTIONS FOR MAINTENANCE REFERENCE.



CUTOUT TABLE

TOUCHSCREEN	CUTOUT
4" SCREEN	3.7 X 5.1"
7" SCREEN	7.3" X 4.8"

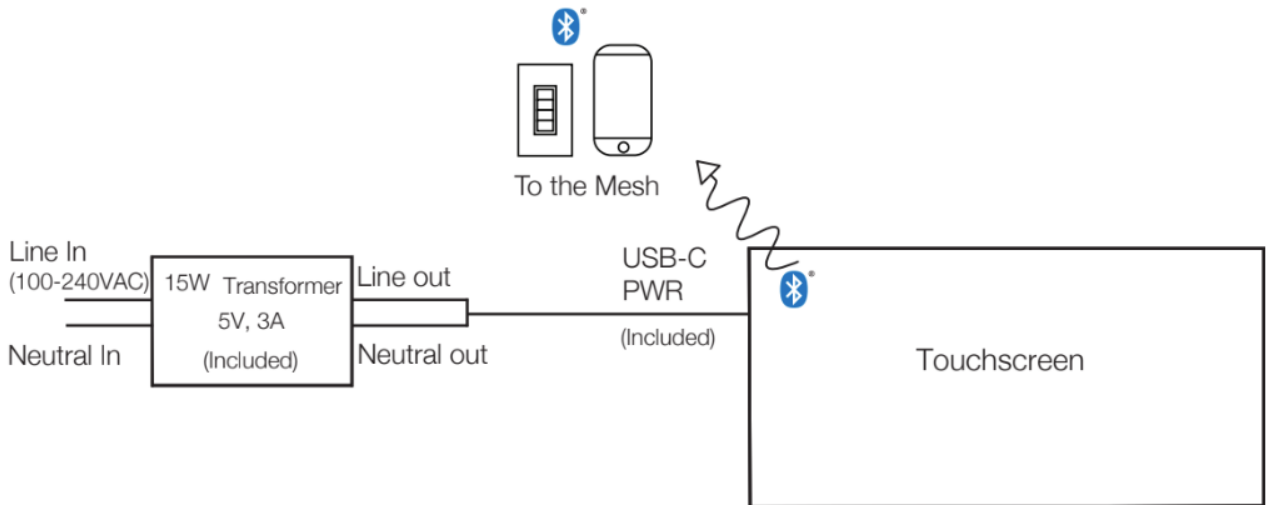
TOUCHSCREEN INSTALLATION



1. MAKE A CUT OUT AS PER THE CUTOUT TABLE IN THE WALL USING APPROPRIATE CUTTING TOOL. CUT OUT CAN BE LANDSCAPE OR POTRAIT MODE. . MAKE SURE TO PULL OUT THE USB-C THROUGH THE CUT OUT. (FIGURE 1)
2. CONNECT THE USB-C TO THE TOUCH SCREEN. USB-C IS FOR POWER AND NECESSARY FOR OPERATION.(FIGURE 2)
3. PULL THE SPRINGS BACK (FIGURE 3)
4. INSERT THE TOUCH SCREEN IN THE WALL. MAKE SURE ALL CABLES ARE INSIDE THE WALL. (FIGURE 4)
5. FLIP ON THE BREAKER TO THE SCREEN. IT WILL AUTOMATICALLY START THE SET-UP ROUTINE. (FIGURE 5)

WIRING DIAGRAM

INPUT POWER: 5V, 3A, USB-C



- Consult Spec Sheet for full data on voltage range and current compatibility.

For best results, drivers need to be installed within 30 feet of the closest device within the Bluetooth Mesh network. Signal strength significantly decreases in presence of metal barriers such as when devices are enclosed in metal boxes.